

## Alu-pile ground mounting system

Ideal for uneven terrain, economical for large projects

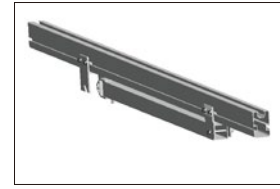
- Double post optional for larger span and bigger array.
- Ramming posts saves the additional excavation works.
- Significant savings by pile-driven machine with fast piling.
- Single post system allows for easy maintenance.



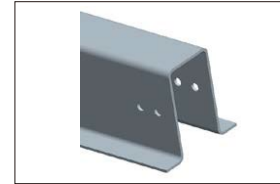
## Features

Install site	Open terrain
Elevation angle	Up to 60°
Wind speed	Up to 88m/s(316.8kmh/196.9mph)
Snow load	Up to 150cm
Standard	AS/NZ1170.2:2011, JIS C 8955:2011, other international standards
Distance between footings	Depending on load condition , refer to manul
Clearance	Up to request
PV module	Framed, unframed
Module orientation	Landscape, portrait
Size of module array	Any layout up to site condition
Foundation	Pile in or pre-cast, bored pier
Material	Anodized aluminum 6005 T6, stainless steel 304, hot-dipped galvanized steel Q253B
Color	Natural, powder coated
Module widths	Maximum 1.0m
Module lengths	Maximum 2.0m
Warranty	10 years limited warranty, refer to warranty doc

- All profiles are available in various lengths or can be cut to measure



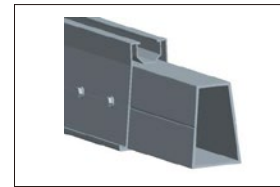
Pre-assembled beam



Pillar



Pillar Base



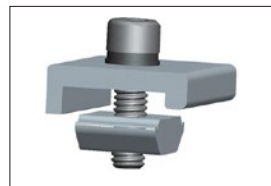
Rail & Rail Connector



End Clamp



Inter Clamp



Rail Clamp



Open terrain



10  
Years  
Warranty



Framed module



Unframed module



Orientation landscape



Orientation portrait

